

TACTICAL PRE PLAN

FRANCINE VILLA EAST

DESCRIPTON; An area of older single-family homes built closely together. The homes on the east side of San Simeon Street are perched above several steep chimney chutes filled with fast burning fuel. Most homes have substandard clearance and many rear yard additions. Flame lengths will be 40-50 feet with considerable spotting under strong NE or SW Wind conditions.

WATER SOURCE: The area has hydrants served with only a 4 inch main.

SHELTER IN PLACE: NOT RECOMENDED; Residents should be evacuated onto Camp Pendleton through identified escape routes. (see map and photo)

PRIORITY PROTECTION: Homes directly above chimney chutes.

RESOURCE NEEDS: Structure group;

2 Type I Strike Teams Engines
1 Type III Strike Team Engines
1 Type I Hand Crew
1 Type II Water Tender

Divisions A and Z

2 Type III Strike Teams
4 Type I Hand Crews
2 Type II Water Tenders
1 Type I Dozer
2 Type II Helicopters
2 Type II Air Tankers
1 ATGS
2 Div Supervisors
1 Opns. Section Chief
1 Air Opns Branch Director

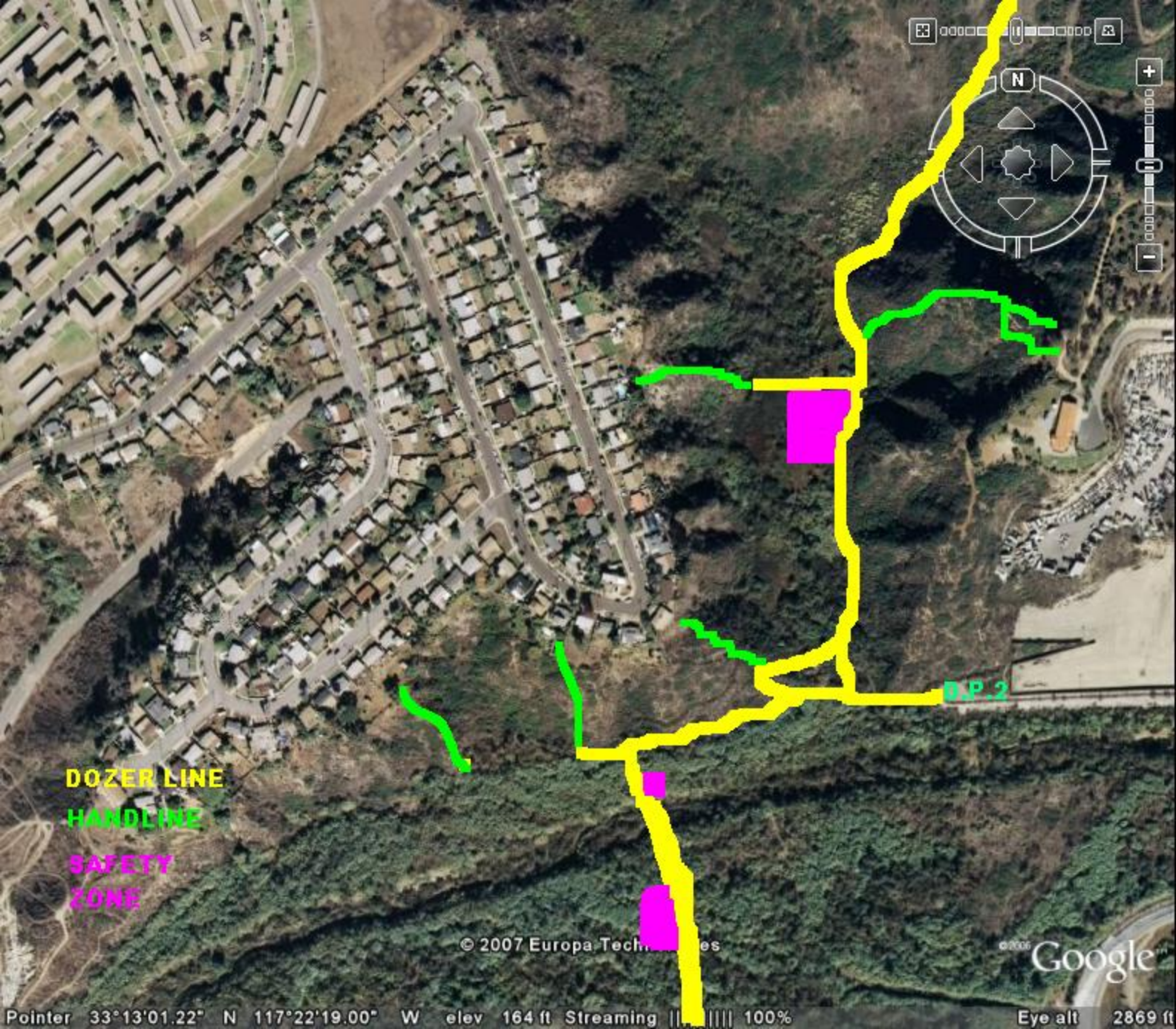
SUGGESTED TACTICS

Structure Group- have the hand crew help prep structures, debris and flammable vegetation removal, then assist with hose line movement. Use the Type III ST for ember patrol, back-up to the Type Is, and when possible attack the head fire with a down-hill hose lay. BE CAREFUL going down hill, use your aircraft to knock down the fire and keep one loaded above the hose lay operation to pick up any spots.

Divisions A and Z- make an aggressive flanking attack with hose lays followed up with hand crew holding lines. Use the air tankers in direct support of the hose lays and the helicopters to defend the homes.

It is imperative that the fire not get well established in the bottom of Benet Canyon. Such a development will directly threaten the homes on San Simeon, The Prince of Peace Abbey, the communications site, and the many homes on the south side of Wire Mountain Housing.

USE A DIRECT ATTACK- BE AGGRESSIVE. YOU WILL HAVE LITTLE TIME IF YOUR FACING STRONG PM WINDS. DON'T HEAD HUNT WITH YOUR AIRCRAFT SUPPORT YOUR FLANKS.



DOZER LINE
HANDLINE
SAFETY ZONE

D.P. 2

© 2007 Europa Technologies

© 2006 Google

Pointer 33°13'01.22" N 117°22'19.00" W elev 164 ft Streaming 100%

Eye alt 2869 ft



FRANCINE VILLA EAST OCEANSIDE



SPECIFIC SITE RISK

Francine Villa East RISK ASSESSMENT MATRIX		
SAFETY	STATIC	ATTACK
FF Safe 3	Fuels 3	Access 2
Civ Safe 2	Topog 3	Water 2
Air Safe 3	Clear 3	Comm 1
Hazmat 2	Const 3	Tac Air 3
	Density 3	

3	2	1
POOR- HIGH RISK	MOD. RISK	GOOD- LOW RISK

RISK COLOR CODE

S A F E T Y	FF SAFETY	FF Safe	NO SAFETY ZONES	MARGINAL SAFETY ZONES	ADEQUATE SAFETY ZONES
	CIVILIAN SAFETY	Civ Safe	MANDATORY EVACUATION	EVACUATE IF TIME PERMITS	SHELTER IN PLACE
	AIR SAFETY	Air Safe	AERIAL OBSTRUCTIONS & STEEP CANYONS	STEEP CANYONS OR AERIAL OBSTRUCTIONS	NO HAZARDS
	HAZMAT	Hazmat	BULK LPG, FUEL, CHEMICAL	HAZARDS IN BARNs & STORAGE SHEDS	NONE
--					
S T A T I C	FUELS	Fuels	HEAVY OR DEAD TREES / BRUSH	MODERATE	LIGHT
	TOPOGRAPHY	Topog	STEEP	MEDIUM SLOPE	FLAT
	CLEARANCE	Clear	30 FEET OR LESS	30 TO 70 FEET	MORE THAN 70 FEET
	CONSTRUCTION	Const	ABUNDANT COMBUSTABLE ROOFS / EXTERIOR	SOME COMBUSTABLE ROOFS / EXTERIOR	NON COMBUSTABLE ROOFS / EXTERIOR
--					
A T T A C K	STRUCTURAL SPACING	Density	DENSE & TIGHT STRUCTURAL SPACING	SUBDIVISION TRACTS	RURAL, DISPERSED
	ACCESS	Access	NARROW DIRT ROADS NO TURN AROUND AREAS	ONE LANE PAVED, TURN AROUNDS, ONE WAY IN & OUT	MIN. TWO LANES, PAVED, MULTIPLE WAYS IN & OUT
	WATER	Water	NO WATER SOURCE	PONDS, POOLS, LOW FLOW HYDRANTS	GOOD HYDRANTS
	COMMUNICATIONS	Comm	OVERALL POOR RADIO OR CELL COVERAGE	GENERAL RADIO COVERAGE WITH SOME WEAK SPOTS	GOOD RADIO & CELL COVERAGE
	TAC AIR SUPPORT	Tac Air	20 MIN+ RELOAD & RETURN TIME, NO LZ's	10 TO 15 MIN RELOADS & TURN AROUND TIME, NO LZ's	5 MIN OR LESS RELOAD & RETURN TIME, PLENTY LZ'S

*COURTESY OF U.S. ARMY-NATIONAL TRAINING CENTER



Bailey Meadow Area Greenwood Drive



SPECIFIC SITE RISK

BAILEY MDW. – GREENWOOD DR. RISK ASSESSMENT MATRIX		
SAFETY	STATIC	ATTACK
FF Safe 2	Fuels 1	Access 2
Civ Safe 1	Topog 2	Water 2
Air Safe 2	Clear 1	Comm 1
Hazmat 2	Const 1	Tac Air 2
	Density 2	

1	2	3
POOR-HIGH RISK	MOD. RISK	GOOD-LOW RISK

RISK COLOR CODE

S A F E T Y	FF SAFETY	FF Safe	NO SAFETY ZONES	MARGINAL SAFETY ZONES	ADEQUATE SAFETY ZONES
	CIVILIAN SAFETY	Civ Safe	MANDATORY EVACUATION	EVACUATE IF TIME PERMITS	SHELTER IN PLACE
	AIR SAFETY	Air Safe	AERIAL OBSTRUCTIONS & STEEP CANYONS	STEEP CANYONS OR AERIAL OBSTRUCTIONS	NO HAZARDS
	HAZMAT	Hazmat	BULK LPG, FUEL, CHEMICAL	HAZARDS IN BARNs & STORAGE SHEDS	NONE
--					
S T A T I C	FUELS	Fuels	HEAVY OR DEAD TREES / BRUSH	MODERATE	LIGHT
	TOPOGRAPHY	Topog	STEEP	MEDIUM SLOPE	FLAT
	CLEARANCE	Clear	30 FEET OR LESS	30 TO 70 FEET	MORE THAN 70 FEET
	CONSTRUCTION	Const	ABUNDANT COMBUSTABLE ROOFS / EXTERIOR	SOME COMBUSTABLE ROOFS / EXTERIOR	NON COMBUSTABLE ROOFS / EXTERIOR
--					
A T T A C K	STRUCTURAL SPACING	Density	DENSE & TIGHT STRUCTURAL SPACING	SUBDIVISION TRACTS	RURAL, DISPERSED
	ACCESS	Access	NARROW DIRT ROADS NO TURN AROUND AREAS	ONE LANE PAVED, TURN AROUNDS, ONE WAY IN & OUT	MIN. TWO LANES, PAVED, MULTIPLE WAYS IN & OUT
	WATER	Water	NO WATER SOURCE	PONDS, POOLS, LOW FLOW HYDRANTS	GOOD HYDRANTS
	COMMUNICATIONS	Comm	OVERALL POOR RADIO OR CELL COVERAGE	GENERAL RADIO COVERAGE WITH SOME WEAK SPOTS	GOOD RADIO & CELL COVERAGE
	TAC AIR SUPPORT	Tac Air	20 MIN+ RELOAD & RETURN TIME, NO LZ's	10 TO 15 MIN RELOADS & TURN AROUND TIME, NO LZ's	5 MIN OR LESS RELOAD & RETURN TIME, PLENTY LZ'S

*COURTESY OF U.S. ARMY-NATIONAL TRAINING CENTER



Palomar Mountain State Park State Park Road

SPECIFIC SITE RISK

STATE PARK- STATE PARK RD. RISK ASSESSMENT MATRIX		
SAFETY	STATIC	ATTACK
FF Safe 2	Fuels 1	Access 2
Civ Safe 1	Topog 2	Water 1
Air Safe 2	Clear 1	Comm 1
Hazmat 2	Const 1	Tac Air 2
	Density 2	

RISK COLOR CODE

S A F E T Y	FF SAFETY	FF Safe	NO SAFETY ZONES	MARGINAL SAFETY ZONES	ADEQUATE SAFETY ZONES
	CIVILIAN SAFETY	Civ Safe	MANDATORY EVACUATION	EVACUATE IF TIME PERMITS	SHELTER IN PLACE
	AIR SAFETY	Air Safe	AERIAL OBSTRUCTIONS & STEEP CANYONS	STEEP CANYONS OR AERIAL OBSTRUCTIONS	NO HAZARDS
	HAZMAT	Hazmat	BULK LPG, FUEL, CHEMICAL	HAZARDS IN BARNs & STORAGE SHEDS	NONE
--					
S T A T I C	FUELS	Fuels	HEAVY OR DEAD TREES / BRUSH	MODERATE	LIGHT
	TOPOGRAPHY	Topog	STEEP	MEDIUM SLOPE	FLAT
	CLEARANCE	Clear	30 FEET OR LESS	30 TO 70 FEET	MORE THAN 70 FEET
	CONSTRUCTION	Const	ABUNDANT COMBUSTABLE ROOFS / EXTERIOR	SOME COMBUSTABLE ROOFS / EXTERIOR	NON COMBUSTABLE ROOFS / EXTERIOR
--					
A T T A C K	STRUCTURAL SPACING	Density	DENSE & TIGHT STRUCTURAL SPACING	SUBDIVISION TRACTS	RURAL, DISPERSED
	ACCESS	Access	NARROW DIRT ROADS NO TURN AROUND AREAS	ONE LANE PAVED, TURN AROUNDS, ONE WAY IN & OUT	MIN. TWO LANES, PAVED, MULTIPLE WAYS IN & OUT
	WATER	Water	NO WATER SOURCE	PONDS, POOLS, LOW FLOW HYDRANTS	GOOD HYDRANTS
	COMMUNICATIONS	Comm	OVERALL POOR RADIO OR CELL COVERAGE	GENERAL RADIO COVERAGE WITH SOME WEAK SPOTS	GOOD RADIO & CELL COVERAGE
	TAC AIR SUPPORT	Tac Air	20 MIN+ RELOAD & RETURN TIME, NO LZ's	10 TO 15 MIN RELOADS & TURN AROUND TIME, NO LZ's	5 MIN OR LESS RELOAD & RETURN TIME, PLENTY LZ'S

1	2	3
POOR-HIGH RISK	MOD. RISK	GOOD-LOW RISK

*COURTESY OF U.S. ARMY-NATIONAL TRAINING CENTER



CNF Fry Creek Observatory Campground Canfield Road



SPECIFIC SITE RISK

FRY CR.- OBSERVATORY CAMP RISK ASSESSMENT MATRIX		
SAFETY	STATIC	ATTACK
FF Safe 2	Fuels 1	Access 2
Civ Safe 3	Topog 2	Water 1
Air Safe 1	Clear 1	Comm 2
Hazmat 2	Const 2	Tac Air 2
	Density 2	

1	2	3
POOR-HIGH RISK	MOD. RISK	GOOD-LOW RISK

RISK COLOR CODE

S A F E T Y	FF SAFETY	FF Safe	NO SAFETY ZONES	MARGINAL SAFETY ZONES	ADEQUATE SAFETY ZONES
	CIVILIAN SAFETY	Civ Safe	MANDATORY EVACUATION	EVACUATE IF TIME PERMITS	SHELTER IN PLACE
	AIR SAFETY	Air Safe	AERIAL OBSTRUCTIONS & STEEP CANYONS	STEEP CANYONS OR AERIAL OBSTRUCTIONS	NO HAZARDS
	HAZMAT	Hazmat	BULK LPG, FUEL, CHEMICAL	HAZARDS IN BARNs & STORAGE SHEDS	NONE
--					
S T A T I C	FUELS	Fuels	HEAVY OR DEAD TREES / BRUSH	MODERATE	LIGHT
	TOPOGRAPHY	Topog	STEEP	MEDIUM SLOPE	FLAT
	CLEARANCE	Clear	30 FEET OR LESS	30 TO 70 FEET	MORE THAN 70 FEET
	CONSTRUCTION	Const	ABUNDANT COMBUSTABLE ROOFS / EXTERIOR	SOME COMBUSTABLE ROOFS / EXTERIOR	NON COMBUSTABLE ROOFS / EXTERIOR
--					
A T T A C K	STRUCTURAL SPACING	Density	DENSE & TIGHT STRUCTURAL SPACING	SUBDIVISION TRACTS	RURAL, DISPERSED
	ACCESS	Access	NARROW DIRT ROADS NO TURN AROUND AREAS	ONE LANE PAVED, TURN AROUNDS, ONE WAY IN & OUT	MIN. TWO LANES, PAVED, MULTIPLE WAYS IN & OUT
	WATER	Water	NO WATER SOURCE	PONDS, POOLS, LOW FLOW HYDRANTS	GOOD HYDRANTS
	COMMUNICATIONS	Comm	OVERALL POOR RADIO OR CELL COVERAGE	GENERAL RADIO COVERAGE WITH SOME WEAK SPOTS	GOOD RADIO & CELL COVERAGE
	TAC AIR SUPPORT	Tac Air	20 MIN+ RELOAD & RETURN TIME, NO LZ's	10 TO 15 MIN RELOADS & TURN AROUND TIME, NO LZ's	5 MIN OR LESS RELOAD & RETURN TIME, PLENTY LZ'S

*COURTESY OF U.S. ARMY-NATIONAL TRAINING CENTER



Spanish Trails Girl Scout Camp



SPECIFIC SITE RISK

GIRL SCOUT CAMP RISK ASSESSMENT MATRIX		
SAFETY	STATIC	ATTACK
FF Safe 1	Fuels 2	Access 1
Civ Safe 1	Topog 2	Water 1
Air Safe 1	Clear 1	Comm 1
Hazmat 2	Const 3	Tac Air 2
	Density 1	

1	2	3
POOR-HIGH RISK	MOD. RISK	GOOD-LOW RISK

RISK COLOR CODE

S A F E T Y	FF SAFETY	FF Safe	NO SAFETY ZONES	MARGINAL SAFETY ZONES	ADEQUATE SAFETY ZONES
	CIVILIAN SAFETY	Civ Safe	MANDATORY EVACUATION	EVACUATE IF TIME PERMITS	SHELTER IN PLACE
	AIR SAFETY	Air Safe	AERIAL OBSTRUCTIONS & STEEP CANYONS	STEEP CANYONS OR AERIAL OBSTRUCTIONS	NO HAZARDS
	HAZMAT	Hazmat	BULK LPG, FUEL, CHEMICAL	HAZARDS IN BARNs & STORAGE SHEDS	NONE
--					
S T A T I C	FUELS	Fuels	HEAVY OR DEAD TREES / BRUSH	MODERATE	LIGHT
	TOPOGRAPHY	Topog	STEEP	MEDIUM SLOPE	FLAT
	CLEARANCE	Clear	30 FEET OR LESS	30 TO 70 FEET	MORE THAN 70 FEET
	CONSTRUCTION	Const	ABUNDANT COMBUSTABLE ROOFS / EXTERIOR	SOME COMBUSTABLE ROOFS / EXTERIOR	NON COMBUSTABLE ROOFS / EXTERIOR
A T T A C K	STRUCTURAL SPACING	Density	DENSE & TIGHT STRUCTURAL SPACING	SUBDIVISION TRACTS	RURAL, DISPERSED
	ACCESS	Access	NARROW DIRT ROADS NO TURN AROUND AREAS	ONE LANE PAVED, TURN AROUNDS, ONE WAY IN & OUT	MIN. TWO LANES, PAVED, MULTIPLE WAYS IN & OUT
	WATER	Water	NO WATER SOURCE	PONDS, POOLS, LOW FLOW HYDRANTS	GOOD HYDRANTS
	COMMUNICATIONS	Comm	OVERALL POOR RADIO OR CELL COVERAGE	GENERAL RADIO COVERAGE WITH SOME WEAK SPOTS	GOOD RADIO & CELL COVERAGE
	TAC AIR SUPPORT	Tac Air	20 MIN+ RELOAD & RETURN TIME, NO LZ's	10 TO 15 MIN RELOADS & TURN AROUND TIME, NO LZ's	5 MIN OR LESS RELOAD & RETURN TIME, PLENTY LZ'S

*COURTESY OF U.S. ARMY-NATIONAL TRAINING CENTER



Palomar Observatory Area



SPECIFIC SITE RISK

OBSERVATORY AREA RISK ASSESSMENT MATRIX		
SAFETY	STATIC	ATTACK
FF Safe 2	Fuels 2	Access 3
Civ Safe 3	Topog 3	Water 3
Air Safe 3	Clear 2	Comm 3
Hazmat 2	Const 3	Tac Air 2
	Density 3	

1	2	3
POOR-HIGH RISK	MOD. RISK	GOOD-LOW RISK

RISK COLOR CODE

S A F E T Y	FF SAFETY	FF Safe	NO SAFETY ZONES	MARGINAL SAFETY ZONES	ADEQUATE SAFETY ZONES	
	CIVILIAN SAFETY	Civ Safe	MANDATORY EVACUATION	EVACUATE IF TIME PERMITS	SHELTER IN PLACE	
	AIR SAFETY	Air Safe	AERIAL OBSTRUCTIONS & STEEP CANYONS	STEEP CANYONS OR AERIAL OBSTRUCTIONS	NO HAZARDS	
	HAZMAT	Hazmat	BULK LPG, FUEL, CHEMICAL	HAZARDS IN BARNs & STORAGE SHEDS	NONE	
	--					
	S T A T I C	FUELS	Fuels	HEAVY OR DEAD TREES / BRUSH	MODERATE	LIGHT
		TOPOGRAPHY	Topog	STEEP	MEDIUM SLOPE	FLAT
		CLEARANCE	Clear	30 FEET OR LESS	30 TO 70 FEET	MORE THAN 70 FEET
		CONSTRUCTION	Const	ABUNDANT COMBUSTABLE ROOFS / EXTERIOR	SOME COMBUSTABLE ROOFS / EXTERIOR	NON COMBUSTABLE ROOFS / EXTERIOR
		STRUCTURAL SPACING	Density	DENSE & TIGHT STRUCTURAL SPACING	SUBDIVISION TRACTS	RURAL, DISPERSED
--						
A T T A C K		ACCESS	Access	NARROW DIRT ROADS NO TURN AROUND AREAS	ONE LANE PAVED, TURN AROUNDS, ONE WAY IN & OUT	MIN. TWO LANES, PAVED, MULTIPLE WAYS IN & OUT
		WATER	Water	NO WATER SOURCE	PONDS, POOLS, LOW FLOW HYDRANTS	GOOD HYDRANTS
		COMMUNICATIONS	Comm	OVERALL POOR RADIO OR CELL COVERAGE	GENERAL RADIO COVERAGE WITH SOME WEAK SPOTS	GOOD RADIO & CELL COVERAGE
		TAC AIR SUPPORT	Tac Air	20 MIN+ RELOAD & RETURN TIME, NO LZ's	10 TO 15 MIN RELOADS & TURN AROUND TIME, NO LZ's	5 MIN OR LESS RELOAD & RETURN TIME, PLENTY LZ'S

*COURTESY OF U.S. ARMY-NATIONAL TRAINING CENTER



Palomar Elementary School



SPECIFIC SITE RISK

PALOMAR ELEMENTARY SCHOOL RISK ASSESSMENT MATRIX		
SAFETY	STATIC	ATTACK
FF Safe 2	Fuels 2	Access 3
Civ Safe 1	Topog 2	Water 3
Air Safe 2	Clear 1	Comm 3
Hazmat 2	Const 1	Tac Air 2
	Density 3	

1	2	3
POOR-HIGH RISK	MOD. RISK	GOOD-LOW RISK

RISK COLOR CODE

S A F E T Y	FF SAFETY	FF Safe	NO SAFETY ZONES	MARGINAL SAFETY ZONES	ADEQUATE SAFETY ZONES
	CIVILIAN SAFETY	Civ Safe	MANDATORY EVACUATION	EVACUATE IF TIME PERMITS	SHELTER IN PLACE
	AIR SAFETY	Air Safe	AERIAL OBSTRUCTIONS & STEEP CANYONS	STEEP CANYONS OR AERIAL OBSTRUCTIONS	NO HAZARDS
	HAZMAT	Hazmat	BULK LPG, FUEL, CHEMICAL	HAZARDS IN BARNs & STORAGE SHEDS	NONE
--					
S T A T I C	FUELS	Fuels	HEAVY OR DEAD TREES / BRUSH	MODERATE	LIGHT
	TOPOGRAPHY	Topog	STEEP	MEDIUM SLOPE	FLAT
	CLEARANCE	Clear	30 FEET OR LESS	30 TO 70 FEET	MORE THAN 70 FEET
	CONSTRUCTION	Const	ABUNDANT COMBUSTABLE ROOFS / EXTERIOR	SOME COMBUSTABLE ROOFS / EXTERIOR	NON COMBUSTABLE ROOFS / EXTERIOR
--					
A T T A C K	STRUCTURAL SPACING	Density	DENSE & TIGHT STRUCTURAL SPACING	SUBDIVISION TRACTS	RURAL, DISPERSED
	ACCESS	Access	NARROW DIRT ROADS NO TURN AROUND AREAS	ONE LANE PAVED, TURN AROUNDS, ONE WAY IN & OUT	MIN. TWO LANES, PAVED, MULTIPLE WAYS IN & OUT
	WATER	Water	NO WATER SOURCE	PONDS, POOLS, LOW FLOW HYDRANTS	GOOD HYDRANTS
	COMMUNICATIONS	Comm	OVERALL POOR RADIO OR CELL COVERAGE	GENERAL RADIO COVERAGE WITH SOME WEAK SPOTS	GOOD RADIO & CELL COVERAGE
	TAC AIR SUPPORT	Tac Air	20 MIN+ RELOAD & RETURN TIME, NO LZ's	10 TO 15 MIN RELOADS & TURN AROUND TIME, NO LZ's	5 MIN OR LESS RELOAD & RETURN TIME, PLENTY LZ'S

*COURTESY OF U.S. ARMY-NATIONAL TRAINING CENTER



Palomar Christian Conference Center



SPECIFIC SITE RISK

PALOMAR CHRISTIAN CONF. CTR. RISK ASSESSMENT MATRIX		
SAFETY	STATIC	ATTACK
FF Safe 2	Fuels 1	Access 2
Civ Safe 2	Topog 1	Water 3
Air Safe 2	Clear 2	Comm 2
Hazmat 2	Const 2	Tac Air 2
	Density 2	

1	2	3
POOR-HIGH RISK	MOD. RISK	GOOD-LOW RISK

RISK COLOR CODE

S A F E T Y	S T A T I C	RISK COLOR CODE		
		Red	Yellow	Green
FF SAFETY	FF Safe	NO SAFETY ZONES	MARGINAL SAFETY ZONES	ADEQUATE SAFETY ZONES
CIVILIAN SAFETY	Civ Safe	MANDATORY EVACUATION	EVACUATE IF TIME PERMITS	SHELTER IN PLACE
AIR SAFETY	Air Safe	AERIAL OBSTRUCTIONS & STEEP CANYONS	STEEP CANYONS OR AERIAL OBSTRUCTIONS	NO HAZARDS
HAZMAT	Hazmat	BULK LPG, FUEL, CHEMICAL	HAZARDS IN BARNs & STORAGE SHEDS	NONE
FUELS	Fuels	HEAVY OR DEAD TREES / BRUSH	MODERATE	LIGHT
TOPOGRAPHY	Topog	STEEP	MEDIUM SLOPE	FLAT
CLEARANCE	Clear	30 FEET OR LESS	30 TO 70 FEET	MORE THAN 70 FEET
CONSTRUCTION	Const	ABUNDANT COMBUSTABLE ROOFS / EXTERIOR	SOME COMBUSTABLE ROOFS / EXTERIOR	NON COMBUSTABLE ROOFS / EXTERIOR
STRUCTURAL SPACING	Density	DENSE & TIGHT STRUCTURAL SPACING	SUBDIVISION TRACTS	RURAL, DISPERSED
ACCESS	Access	NARROW DIRT ROADS NO TURN AROUND AREAS	ONE LANE PAVED, TURN AROUNDS, ONE WAY IN & OUT	MIN. TWO LANES, PAVED, MULTIPLE WAYS IN & OUT
WATER	Water	NO WATER SOURCE	PONDS, POOLS, LOW FLOW HYDRANTS	GOOD HYDRANTS
COMMUNICATIONS	Comm	OVERALL POOR RADIO OR CELL COVERAGE	GENERAL RADIO COVERAGE WITH SOME WEAK SPOTS	GOOD RADIO & CELL COVERAGE
TAC AIR SUPPORT	Tac Air	20 MIN+ RELOAD & RETURN TIME, NO LZ's	10 TO 15 MIN RELOADS & TURN AROUND TIME, NO LZ's	5 MIN OR LESS RELOAD & RETURN TIME, PLENTY LZ'S

*COURTESY OF U.S. ARMY-NATIONAL TRAINING CENTER



Palomar Outdoor School



SPECIFIC SITE RISK

PALOMAR OUTDOOR SCHOOL RISK ASSESSMENT MATRIX		
SAFETY	STATIC	ATTACK
FF Safe 2	Fuels 2	Access 3
Civ Safe 2	Topog 2	Water 3
Air Safe 2	Clear 2	Comm 1
Hazmat 2	Const 2	Tac Air 2
	Density 3	

1	2	3
POOR-HIGH RISK	MOD. RISK	GOOD-LOW RISK

RISK COLOR CODE

S A F E T Y	FF SAFETY	FF Safe	NO SAFETY ZONES	MARGINAL SAFETY ZONES	ADEQUATE SAFETY ZONES
	CIVILIAN SAFETY	Civ Safe	MANDATORY EVACUATION	EVACUATE IF TIME PERMITS	SHELTER IN PLACE
	AIR SAFETY	Air Safe	AERIAL OBSTRUCTIONS & STEEP CANYONS	STEEP CANYONS OR AERIAL OBSTRUCTIONS	NO HAZARDS
	HAZMAT	Hazmat	BULK LPG, FUEL, CHEMICAL	HAZARDS IN BARNs & STORAGE SHEDS	NONE
--					
S T A T I C	FUELS	Fuels	HEAVY OR DEAD TREES / BRUSH	MODERATE	LIGHT
	TOPOGRAPHY	Topog	STEEP	MEDIUM SLOPE	FLAT
	CLEARANCE	Clear	30 FEET OR LESS	30 TO 70 FEET	MORE THAN 70 FEET
	CONSTRUCTION	Const	ABUNDANT COMBUSTABLE ROOFS / EXTERIOR	SOME COMBUSTABLE ROOFS / EXTERIOR	NON COMBUSTABLE ROOFS / EXTERIOR
--					
A T T A C K	STRUCTURAL SPACING	Density	DENSE & TIGHT STRUCTURAL SPACING	SUBDIVISION TRACTS	RURAL, DISPERSED
	ACCESS	Access	NARROW DIRT ROADS NO TURN AROUND AREAS	ONE LANE PAVED, TURN AROUNDS, ONE WAY IN & OUT	MIN. TWO LANES, PAVED, MULTIPLE WAYS IN & OUT
	WATER	Water	NO WATER SOURCE	PONDS, POOLS, LOW FLOW HYDRANTS	GOOD HYDRANTS
	COMMUNICATIONS	Comm	OVERALL POOR RADIO OR CELL COVERAGE	GENERAL RADIO COVERAGE WITH SOME WEAK SPOTS	GOOD RADIO & CELL COVERAGE
	TAC AIR SUPPORT	Tac Air	20 MIN+ RELOAD & RETURN TIME, NO LZ's	10 TO 15 MIN RELOADS & TURN AROUND TIME, NO LZ's	5 MIN OR LESS RELOAD & RETURN TIME, PLENTY LZ'S

*COURTESY OF U.S. ARMY-NATIONAL TRAINING CENTER



South Grade- Oak Knoll Campground



SPECIFIC SITE RISK

SOUTH GRADE- OAK KNOLL CAMP		
RISK ASSESSMENT MATRIX		
SAFETY	STATIC	ATTACK
FF Safe 2	Fuels 1	Access 2
Civ Safe 1	Topog 2	Water 1
Air Safe 1	Clear 1	Comm 1
Hazmat 2	Const 1	Tac Air 1
	Density 2	

1	2	3
POOR-HIGH RISK	MOD. RISK	GOOD-LOW RISK

RISK COLOR CODE

S A F E T Y	FF SAFETY	FF Safe	NO SAFETY ZONES	MARGINAL SAFETY ZONES	ADEQUATE SAFETY ZONES
	CIVILIAN SAFETY	Civ Safe	MANDATORY EVACUATION	EVACUATE IF TIME PERMITS	SHELTER IN PLACE
	AIR SAFETY	Air Safe	AERIAL OBSTRUCTIONS & STEEP CANYONS	STEEP CANYONS OR AERIAL OBSTRUCTIONS	NO HAZARDS
	HAZMAT	Hazmat	BULK LPG, FUEL, CHEMICAL	HAZARDS IN BARNs & STORAGE SHEDS	NONE
	---	FUELS	Fuels	HEAVY OR DEAD TREES / BRUSH	MODERATE
S T A T I C	TOPOGRAPHY	Topog	STEEP	MEDIUM SLOPE	FLAT
	CLEARANCE	Clear	30 FEET OR LESS	30 TO 70 FEET	MORE THAN 70 FEET
	CONSTRUCTION	Const	ABUNDANT COMBUSTABLE ROOFS / EXTERIOR	SOME COMBUSTABLE ROOFS / EXTERIOR	NON COMBUSTABLE ROOFS / EXTERIOR
	STRUCTURAL SPACING	Density	DENSE & TIGHT STRUCTURAL SPACING	SUBDIVISION TRACTS	RURAL, DISPERSED
	---	ACCESS	Access	NARROW DIRT ROADS NO TURN AROUND AREAS	ONE LANE PAVED, TURN AROUNDS, ONE WAY IN & OUT
A T T A C K	WATER	Water	NO WATER SOURCE	PONDS, POOLS, LOW FLOW HYDRANTS	GOOD HYDRANTS
	COMMUNICATIONS	Comm	OVERALL POOR RADIO OR CELL COVERAGE	GENERAL RADIO COVERAGE WITH SOME WEAK SPOTS	GOOD RADIO & CELL COVERAGE
	TAC AIR SUPPORT	Tac Air	20 MIN+ RELOAD & RETURN TIME, NO LZ's	10 TO 15 MIN RELOADS & TURN AROUND TIME, NO LZ's	5 MIN OR LESS RELOAD & RETURN TIME, PLENTY LZ'S

*COURTESY OF U.S. ARMY-NATIONAL TRAINING CENTER



East Grade Road



SPECIFIC SITE RISK

EAST GRADE ROAD RISK ASSESSMENT MATRIX		
SAFETY	STATIC	ATTACK
FF Safe 2	Fuels 1	Access 2
Civ Safe 1	Topog 2	Water 1
Air Safe 2	Clear 1	Comm 3
Hazmat 2	Const 1	Tac Air 2
	Density 2	

1	2	3
POOR-HIGH RISK	MOD. RISK	GOOD-LOW RISK

RISK COLOR CODE

S A F E T Y	FF SAFETY	FF Safe	NO SAFETY ZONES	MARGINAL SAFETY ZONES	ADEQUATE SAFETY ZONES	
	CIVILIAN SAFETY	Civ Safe	MANDATORY EVACUATION	EVACUATE IF TIME PERMITS	SHELTER IN PLACE	
	AIR SAFETY	Air Safe	AERIAL OBSTRUCTIONS & STEEP CANYONS	STEEP CANYONS OR AERIAL OBSTRUCTIONS	NO HAZARDS	
	HAZMAT	Hazmat	BULK LPG, FUEL, CHEMICAL	HAZARDS IN BARNs & STORAGE SHEDS	NONE	
	S T A T I C	FUELS	Fuels	HEAVY OR DEAD TREES / BRUSH	MODERATE	LIGHT
		TOPOGRAPHY	Topog	STEEP	MEDIUM SLOPE	FLAT
		CLEARANCE	Clear	30 FEET OR LESS	30 TO 70 FEET	MORE THAN 70 FEET
		CONSTRUCTION	Const	ABUNDANT COMBUSTABLE ROOFS / EXTERIOR	SOME COMBUSTABLE ROOFS / EXTERIOR	NON COMBUSTABLE ROOFS / EXTERIOR
		STRUCTURAL SPACING	Density	DENSE & TIGHT STRUCTURAL SPACING	SUBDIVISION TRACTS	RURAL, DISPERSED
		A T T A C K	ACCESS	Access	NARROW DIRT ROADS NO TURN AROUND AREAS	ONE LANE PAVED, TURN AROUNDS, ONE WAY IN & OUT
WATER			Water	NO WATER SOURCE	PONDS, POOLS, LOW FLOW HYDRANTS	GOOD HYDRANTS
COMMUNICATIONS			Comm	OVERALL POOR RADIO OR CELL COVERAGE	GENERAL RADIO COVERAGE WITH SOME WEAK SPOTS	GOOD RADIO & CELL COVERAGE
TAC AIR SUPPORT			Tac Air	20 MIN+ RELOAD & RETURN TIME, NO LZ's	10 TO 15 MIN RELOADS & TURN AROUND TIME, NO LZ's	5 MIN OR LESS RELOAD & RETURN TIME, PLENTY LZ'S

*COURTESY OF U.S. ARMY-NATIONAL TRAINING CENTER



Nate Harrison Road



SPECIFIC SITE RISK

NATE HARRISON RD. RISK ASSESSMENT MATRIX		
SAFETY	STATIC	ATTACK
FF Safe 1	Fuels 1	Access 1
Civ Safe 1	Topog 1	Water 1
Air Safe 1	Clear 1	Comm 2
Hazmat 2	Const 1	Tac Air 1
	Density 1	

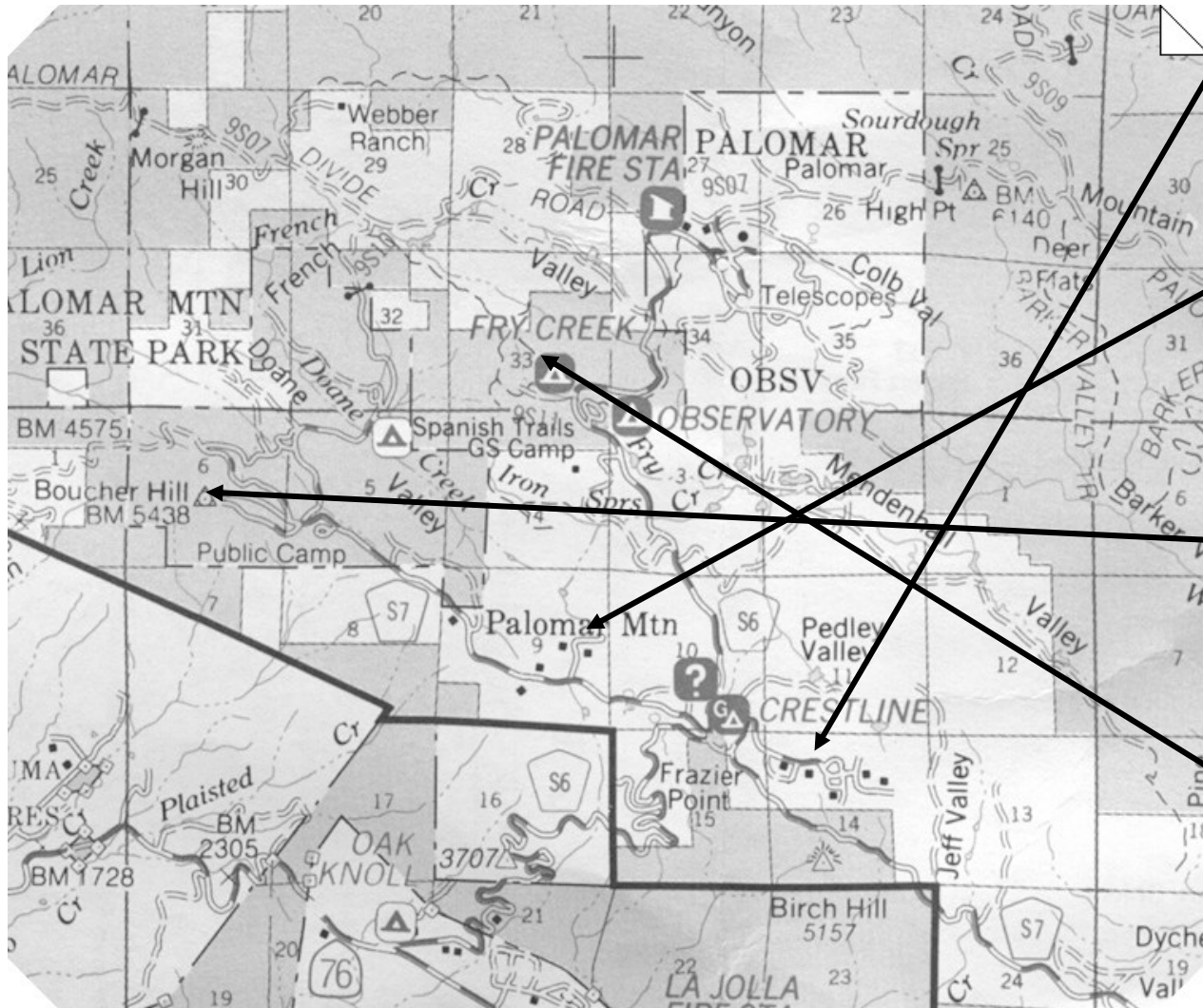
1	2	3
POOR-HIGH RISK	MOD. RISK	GOOD-LOW RISK

RISK COLOR CODE

S A F E T Y	FF SAFETY	FF Safe	NO SAFETY ZONES	MARGINAL SAFETY ZONES	ADEQUATE SAFETY ZONES
	CIVILIAN SAFETY	Civ Safe	MANDATORY EVACUATION	EVACUATE IF TIME PERMITS	SHELTER IN PLACE
	AIR SAFETY	Air Safe	AERIAL OBSTRUCTIONS & STEEP CANYONS	STEEP CANYONS OR AERIAL OBSTRUCTIONS	NO HAZARDS
	HAZMAT	Hazmat	BULK LPG, FUEL, CHEMICAL	HAZARDS IN BARNs & STORAGE SHEDS	NONE
	--				
S T A T I C	FUELS	Fuels	HEAVY OR DEAD TREES / BRUSH	MODERATE	LIGHT
	TOPOGRAPHY	Topog	STEEP	MEDIUM SLOPE	FLAT
	CLEARANCE	Clear	30 FEET OR LESS	30 TO 70 FEET	MORE THAN 70 FEET
	CONSTRUCTION	Const	ABUNDANT COMBUSTABLE ROOFS / EXTERIOR	SOME COMBUSTABLE ROOFS / EXTERIOR	NON COMBUSTABLE ROOFS / EXTERIOR
	STRUCTURAL SPACING	Density	DENSE & TIGHT STRUCTURAL SPACING	SUBDIVISION TRACTS	RURAL, DISPERSED
A T T A C K	ACCESS	Access	NARROW DIRT ROADS NO TURN AROUND AREAS	ONE LANE PAVED, TURN AROUNDS, ONE WAY IN & OUT	MIN. TWO LANES, PAVED, MULTIPLE WAYS IN & OUT
	WATER	Water	NO WATER SOURCE	PONDS, POOLS, LOW FLOW HYDRANTS	GOOD HYDRANTS
	COMMUNICATIONS	Comm	OVERALL POOR RADIO OR CELL COVERAGE	GENERAL RADIO COVERAGE WITH SOME WEAK SPOTS	GOOD RADIO & CELL COVERAGE
	TAC AIR SUPPORT	Tac Air	20 MIN+ RELOAD & RETURN TIME, NO LZ's	10 TO 15 MIN RELOADS & TURN AROUND TIME, NO LZ's	5 MIN OR LESS RELOAD & RETURN TIME, PLENTY LZ'S

*COURTESY OF U.S. ARMY-NATIONAL TRAINING CENTER

PALOMAR MOUNTAIN I-ZONE (E-H)



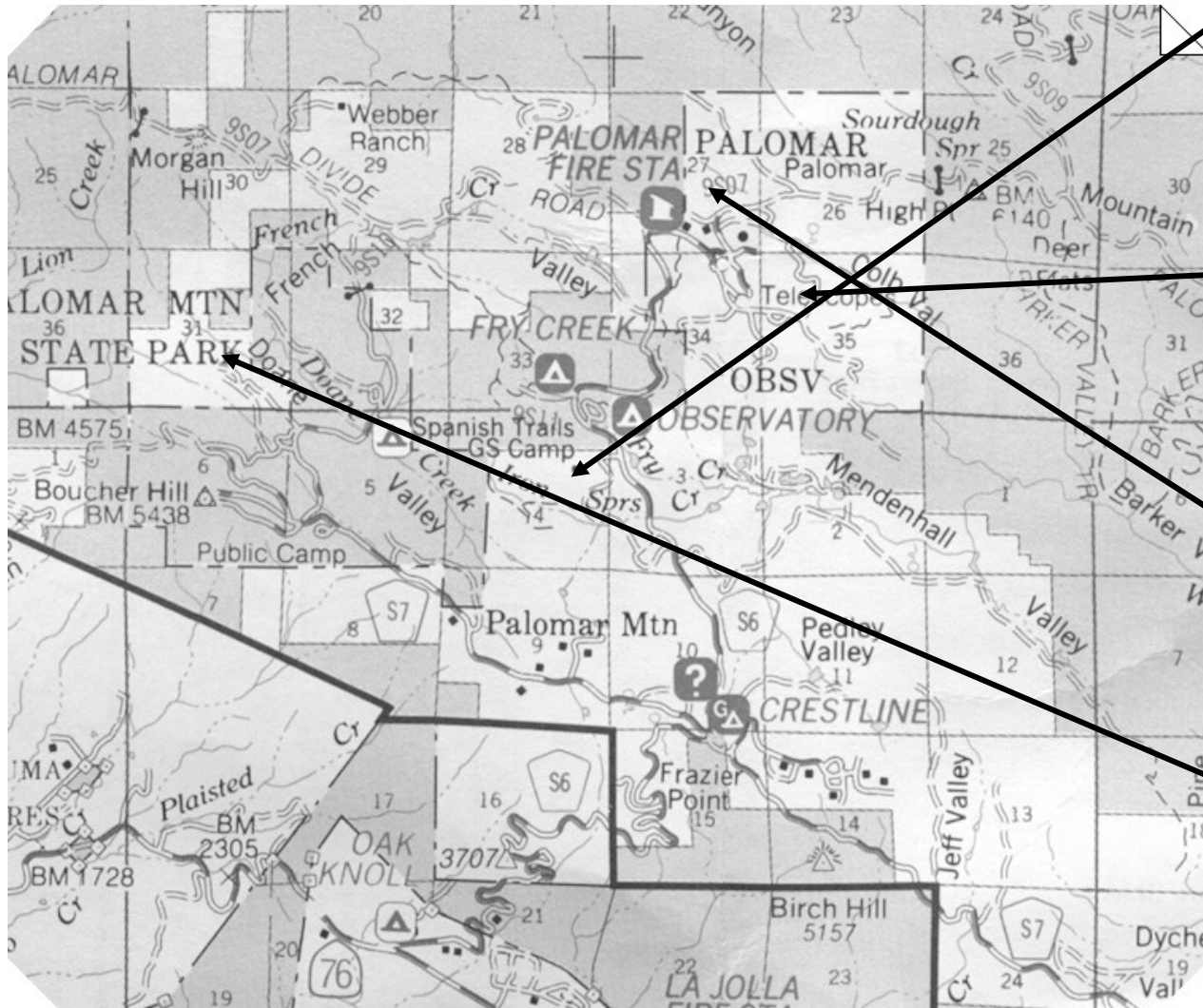
CRESTLINE		
FF Safe 1	Fuels 1	Access 1
Civ Safe 1	Topog 2	Water 2
Air Safe 2	Clear 1	Comm 1
Hazmat 2	Const 1	Tac Air 2
	Density 1	

BAILEY MDW- GREENWOOD DR.		
FF Safe 2	Fuels 1	Access 2
Civ Safe 1	Topog 2	Water 2
Air Safe 2	Clear 1	Comm 1
Hazmat 2	Const 1	Tac Air 2
	Density 2	

STATE PARKS		
FF Safe 2	Fuels 1	Access 2
Civ Safe 1	Topog 2	Water 1
Air Safe 2	Clear 1	Comm 1
Hazmat 2	Const 1	Tac Air 2
	Density 2	

FRY CR.- OBSERVATORY CAMP		
FF Safe 2	Fuels 1	Access 2
Civ Safe 3	Topog 2	Water 1
Air Safe 1	Clear 1	Comm 2
Hazmat 2	Const 2	Tac Air 2
	Density 2	

PALOMAR MOUNTAIN I-ZONE (I-L)



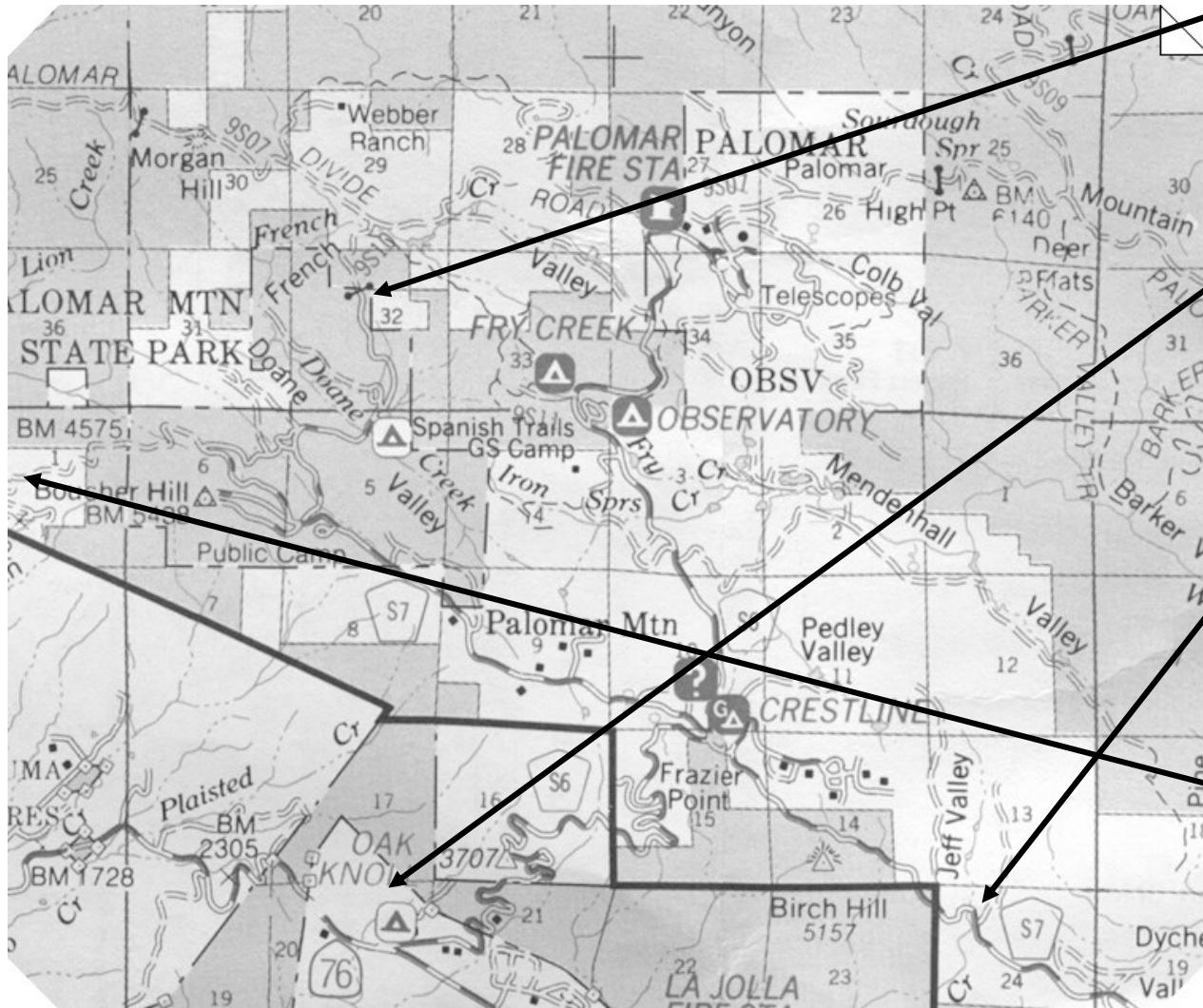
GIRL SCOUT CAMP		
FF Safe 1	Fuels 2	Access 1
Civ Safe 1	Topog 2	Water 1
Air Safe 1	Clear 1	Comm 1
Hazmat 2	Const 3	Tac Air 2
	Density 1	

OBSERVATORY AREA		
FF Safe 2	Fuels 2	Access 3
Civ Safe 3	Topog 3	Water 3
Air Safe 3	Clear 2	Comm 3
Hazmat 2	Const 3	Tac Air 2
	Density 3	

PALOMAR ELEMENTARY SCHOOL		
FF Safe 2	Fuels 2	Access 3
Civ Safe 1	Topog 2	Water 3
Air Safe 2	Clear 1	Comm 3
Hazmat 2	Const 1	Tac Air 2
	Density 3	

PALOMAR CHRISTIAN CONF. CTR.		
FF Safe 2	Fuels 1	Access 2
Civ Safe 2	Topog 1	Water 3
Air Safe 2	Clear 2	Comm 2
Hazmat 2	Const 2	Tac Air 2
	Density 2	

PALOMAR MOUNTAIN I-ZONE (M-P)



PALOMAR OUTDOOR SCHOOL		
FF Safe 2	Fuels 2	Access 3
Civ Safe 2	Topog 2	Water 3
Air Safe 2	Clear 2	Comm 1
Hazmat 2	Const 2	Tac Air 2
	Density 3	

S. GRADE- OAK KNOLL CAMPGRND		
FF Safe 2	Fuels 1	Access 2
Civ Safe 1	Topog 2	Water 1
Air Safe 1	Clear 1	Comm 1
Hazmat 2	Const 1	Tac Air 1
	Density 2	

EAST GRADE ROAD		
FF Safe 2	Fuels 1	Access 2
Civ Safe 1	Topog 2	Water 1
Air Safe 2	Clear 1	Comm 3
Hazmat 2	Const 1	Tac Air 2
	Density 2	

NATE HARRISON RD.		
FF Safe 1	Fuels 1	Access 1
Civ Safe 1	Topog 1	Water 1
Air Safe 1	Clear 1	Comm 2
Hazmat 2	Const 1	Tac Air 1
	Density 1	