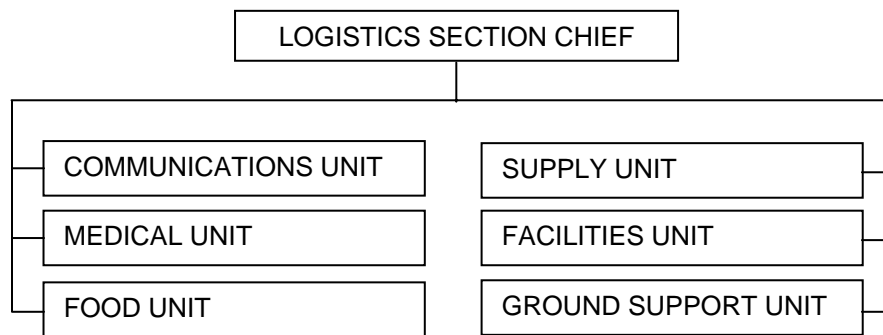


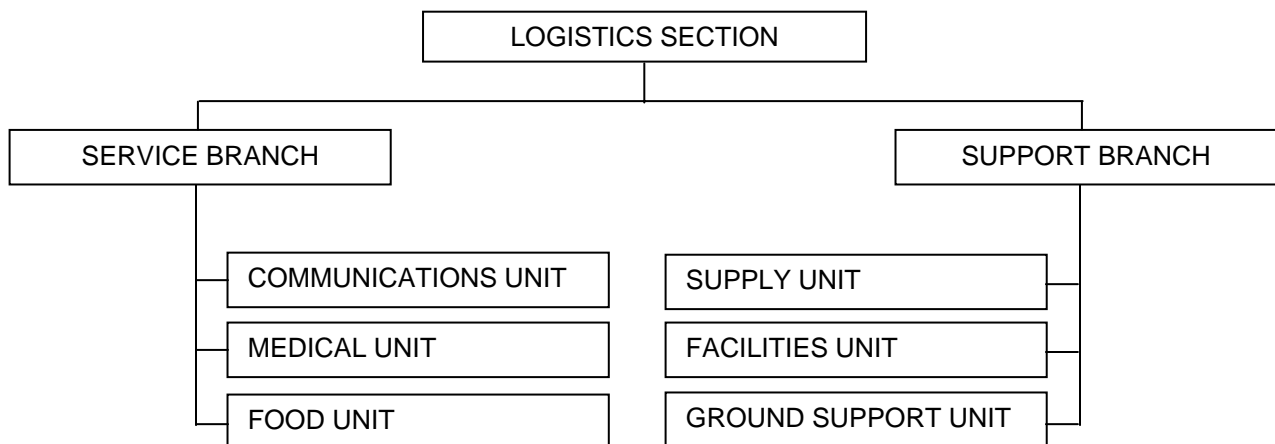
LOGISTICS SECTION:

The Logistics Section is responsible for providing services and support to meet all incident or event needs (except air resources). This is accomplished under the direction of the Logistics Section Chief. The Logistics Section orders all resources from off-incident locations. It provides incident facilities, transportation, supplies, equipment maintenance, fueling, feeding, communications and medical services.

The Logistics Section may also have a deputy. A deputy position is encouraged when all designated units are established on an incident. Under circumstances of a very large incident, or in an incident where it is necessary to have a number of facilities with large numbers of equipment, the Logistics Section can be divided into two Branches. The basic organizational structure of the Logistics Section is shown below.



A two-branch organizational structure for the Logistics Section is shown below:



Logistics Section Chief

The Logistics Section Chief, a member of the General Staff, is responsible for providing facilities, services, and material in support of the incident. The Logistics Section Chief participates in the development and implementation of the Incident Action Plan and activates and supervises the Branches and Units within the Logistics Section.

Communications Unit

The Communications Unit is responsible for developing plans for the effective use of incident communications equipment; supervision of the Incident Communications Center; distribution of communications equipment to incident personnel; and the maintenance and repair of communications equipment.

The Communications Unit has a major responsibility for effective communications planning due to the potential multi-agency use of the Incident Command System. This is especially important in determining required radio nets, establishing inter-agency frequency assignments, and ensuring that maximum use is made of all assigned communications capability.

Medical Unit:

The Medical Unit is primarily responsible for the development of the Medical Plan, obtaining medical aid and transportation for injured and ill incident personnel, and preparations of reports and records. The Medical Unit will also assist the Finance Section in handling compensation for injury related procedures and paper work including written authorizations, billing forms, witness statements and administrative documents on medical situations as required.

Food Unit:

The Food Unit is responsible for supplying food needs for the entire incident, including remote locations (e.g., Camps, Staging Areas), as well as providing food for personnel unable to leave tactical field assignments.

On any incident, the supplying of efficient food services is an extremely important part of the incident operations. The Food Unit must be able to anticipate incident needs both in terms of numbers of personnel to be fed as well as any special feeding requirements due to the kind/location of the incident. The Food Unit must interact closely with the Planning Section to determine personnel requirements, the Facilities Unit for fixed-feeding locations, the Supply Unit for food ordering, and the Ground Support Unit for supplying transportation services.

Supply Unit

The Supply Unit is primarily responsible for ordering personnel, equipment and supplies; receiving and storing all supplies for the incident; maintaining an inventory of supplies; and servicing non-expendable supplies and equipment. The Supply Unit, when established, has the responsibility at the incident for all off-incident ordering.

Facilities Unit

The Facilities Unit is primarily responsible for the layout and activation of incident facilities, e.g., Base, Camp(s), and Incident Command Post. The unit provides sleeping and sanitation facilities for incident personnel and manages Base and Camp(s) operations. Each facility (Base, Camp) is assigned a manger that reports to the Facilities Unit Leader and is responsible for managing the operation of the facility.

Ground Support

The Ground Support Unit is primarily responsible for: 1) support out of service resources, 2) transportation of personnel, supplies, food, and equipment, 3) fueling, service, maintenance, and repair of vehicles and other ground support equipment, and 4) implementing the Traffic Plan for the incident.